

WILD BILLY AIRSTRIP – BEATTY, OREGON

Coordinates: N42 29 34.14 / W121 19 12.54 (N42.49281/W121.32014) Elevation: 4508 feet

SAFETY BRIEFING

The Wild Billy Airstrip is located 4nm Northwest of Beatty, Oregon on the LMT 024/27. The airstrip is privately owned and is reserved for the use of guests of Wild Billy Lake, LLC. Please reference our website, Wildbillylake.com for an overview of the available recreation options at the lake. If you have booked a trip to the lake and would like to utilize the airstrip for your travels, we require all pilots to review this Safety Briefing and sign the Liability Release Form before receiving permission to use the airstrip. Please plan ahead and allow a reasonable amount of time to receive permission to fly your aircraft to Wild Billy Lake.

USE OF THE WILD BILLY AIRSTRIP IS AT YOUR OWN RISK!

Special Considerations:

Wild Billy is a dirt strip at an elevation of 4508 feet. The Pilot in Command is responsible for the proper consideration of the affect that high density altitude and a rough surface have on aircraft performance and capability. During Spring and after periods of heavy rain, the useable length can be as short as 1200 feet due to standing water at each end. High performance aircraft like the PA-18 Super Cub, Cessna 180/185, Maule, or similar are best suited for operations here.

Runway 09/27:

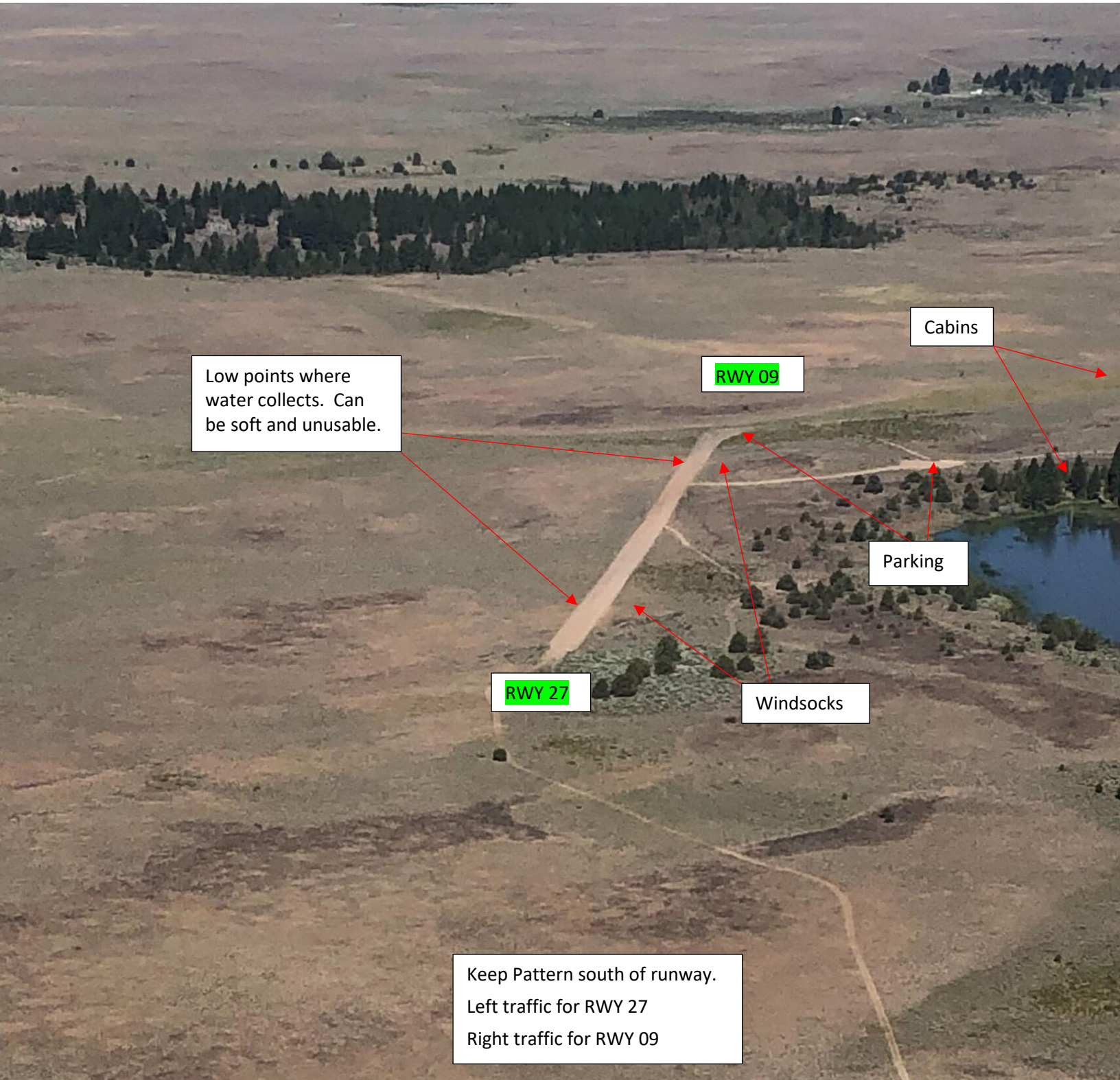
- 2000 feet long x 35 feet wide. Elevation 4508 feet. Both ends have an area where water can collect and is very soft, particularly in early spring. The middle 1200' is the driest and most useable section during these periods.
- Caution for 2 foot high dirt and rock berms on both sides of the runway.
- There are two windsocks, both located on the north side of the runway.
- Left traffic for RWY 27, Right traffic for RWY 09. Please avoid overflying the lake.

Operations:

- Use 122.9 for standard traffic calls.
- Overfly the runway to check for runway condition and the presence of wildlife. Antelope, cattle, deer, and occasionally elk or wild horses can be found on or near the runway.
- Exercise extreme caution if the surface is wet. The runway can be very muddy if wet, rendering it unsafe for aircraft operations. Kingsley Field (KLMT) is only 27 nm away and has multiple runways. There are car rental agencies in Klamath Falls, which is a 1 hour drive by car.
- The primary parking area is near cabin #2, overlooking the lake. Follow the midfield taxiway to the parking area which holds 3 to 4 aircraft. Overflow parking is adjacent to the runway 09 threshold and can accommodate 5 to 6 aircraft but will shorten the useable runway length. Bring your own tiedowns.

Liability Release Form and contact information for permission to use the airstrip:

- For access to the Wild Billy airstrip, pilots must electronically sign the Liability Release Form located here: [Liability Release Form](#)
- Each flight into Wild Billy requires prior permission. Email us at wildbillylake@gmail.com or call (360) 241-4174 (Mike) or (541) 815-6515 (Randy). Email is our preferred method of contact.



Low points where water collects. Can be soft and unusable.

RWY 09

Cabins

Parking

RWY 27

Windsocks

Keep Pattern south of runway.
Left traffic for RWY 27
Right traffic for RWY 09